

**BOARD OF TRUSTEES  
ACADEMIC AND STUDENT AFFAIRS COMMITTEE**

**September 11, 2020 Teleconference  
(will commence following Finance Committee Meeting)**

**Agenda**

**1.0 Action Item**

**1.1 Resolution ASA07-20  
Approval of Amended 2020-2021 Academic Calendar**

Dr. Sunil Ahuja, Provost and Vice President for Academic & Student Affairs, will present Resolution ASA07-20, Approval of Amended 2020-2021 Academic Calendar.

**2.0 Information Items**

**2.1 Academic Affairs Executive Report**

Dr. Ahuja will report on recent activities in Academic and Student Affairs.

**2.2 Weekend of Welcome (WoW)**

Ms. Tiffany Hartman, Director of Student Life, will report on the activities of Weekend of Welcome.

**2.3 Fall Enrollment Report**

Ms. Tami Sheets, Registrar, will report on fall enrollment and top programs based on enrollment.

**3.0 Education**

Dr. Elinda Boyles, Special Assistant to the President, will present an update to the SSU Return to Campus Plan.

**RESOLUTION ASA07-20**

**APPROVAL OF AMENDED 2020-2021 ACADEMIC CALENDAR**

WHEREAS, members of the Calendar Advisory Committee have amended the 2020-2021 Academic Calendar to accommodate changes in light of the ongoing pandemic; and

WHEREAS, the Provost and the President have approved the amended 2020-2021 Academic Calendar;

THEREFORE, BE IT RESOLVED that the Board of Trustees of Shawnee State University approves the Shawnee State University amended 2020- 2021 Academic Calendar, attached hereto.

(September 11, 2020)

## 2020-2021 ACADEMIC CALENDAR

---

### Fall Semester 2020-2021

August 24	Fall semester classes begin (full and first half session)
September 7	Labor Day ( <i>University Closed</i> )
October 16	Last day of first half session (final exams during last scheduled class period)
October 19	First day of second half session
October 20	Grades due in Office of the Registrar by noon (first half session)
November 25	No Classes ( <i>University Closed</i> )
November 26	Thanksgiving Day ( <i>University Closed</i> )
November 27	Thanksgiving Holiday ( <i>University Closed</i> )
November 28	Classes resume
December 1	Last day of classes (full session and second half session)
Dec 2-11	Final Exams (full session classes)
December 12	Fall Commencement – semester ends
December 15	Grades due in Office of the Registrar by noon (full and second half session for on-campus and online classes)
December 24	Christmas Holiday ( <i>University Closed</i> )
December 25	Christmas Holiday ( <i>University Closed</i> )
December 26-31	Winter Break ( <i>University Closed</i> )
January 1	New Year's Holiday ( <i>University Closed</i> )

### Spring Semester 2020-2021

January 11	Spring semester classes begin (full and first half session)
January 18	Martin Luther King, Jr. Day ( <i>University Closed</i> )
February 28	Last day of first half session (final exams during last scheduled class period)
March 1-7	Spring Break
March 3	Grades due in Office of the Registrar by noon (first half session)
March 8	First day of second half- week session
	Spring full session classes resume
April 23	Last day of classes (full session and second half session)
April 24-30	Final Exams (full session classes)
May 1	Commencement
May 4	Grades due in Office of the Registrar by noon (full and second half session)

### Summer Semester 2020-2021

May 10	First day of first seven-week sessions
May 24	First day of full session (ten week)
May 31	Memorial Day ( <i>University Closed</i> )
June 25	Last day of first seven-week session
June 28	Second seven-week session – classes begin
June 29	Grades due in Office of the Registrar by noon (first seven-week session)
July 5	Independence Day Observed ( <i>University Closed</i> )
July 30	Last day of full session
August 3	Grades due in Office of the Registrar by noon (full session)
August 13	Last day of second seven-week session
August 17	Grades due in Office of the Registrar by noon (second seven-week session)

\*\* All half-session summer courses not included within the E-campus programs may continue to be delivered within a 5-week schedule, provided they follow the Ohio Department of Higher Education's requirements: "One semester credit hour will be awarded for a minimum of 750 minutes of formalized instruction that typically requires students to work at out-of-class assignments an average of twice the amount of time as the amount of formalized instruction (1,500 minutes)."

**Academic and Student Affairs Report  
Board of Trustees Meeting  
September 11, 2020**

I am pleased to present the following Academic and Student Affairs Report to the Academic and Student Affairs Committee of the Board of Trustees and to the Board.

**Fall 2020 (and Summer 2020) Instruction Update**

The course instruction modalities for Summer 2020 and Fall 2020 are identified below:

Summer 2020		
Modality of Instruction	Number of Course Sections	Total (%)
Face-to-Face	23	6
Hybrid	57	14
Online	311	80
<b>Total</b>	<b>391</b>	<b>100</b>

Fall 2020		
Modality of Instruction	Number of Course Sections	Total (%)
Face-to-Face	492	44
Hybrid	201	18
Online	413	38
<b>Total</b>	<b>1106</b>	<b>100</b>

The bulk of instruction at SSU during summer was conducted virtually. For Fall 2020, however, as a regular term and the first full term during the pandemic, nearly half the instruction (44%) is being conducted on campus in the face-to-face format. Over a third (38%) is being performed virtually, whereas nearly a fifth (18%) in some combination of hybrid fashion. This distribution of modalities is generally consistent with modalities across universities in Ohio.

**Provost Communication**

Dear Colleagues,

I write this note with great pleasure as the new Provost and Vice President for Academic and Students Affairs at Shawnee State University. Given the highly unusual times we live in, this has been an awkward but warmly welcomed entry to the University. While I wish I had the chance to meet many of you by now, I have appreciated the kind words of welcome I have received.

As we begin a new academic year at the University, and as the new provost, I would like to take this opportunity to put forth some thoughts for academic and student affairs. These are intended to articulate my academic vision and related priorities for Shawnee State, but I should add that these are my thoughts, subject, of course, to many collective conversations on campus about any particular directions.

In order of equal importance, I articulate the following as the top three priorities:

- **Academic Programs:** It is critical that we think about programmatic growth in the form of new programs as well as re-focusing others where needed. Students come to an institution like Shawnee State for programs (granted, many come for the low cost, but for the low cost of *programs*). The question about the right mix of programs (graduate, undergraduate, online, land-based, hybrid, professional, liberal arts) will be the subject of many conversations, but whatever the mix, our decisions must be strategic and consistent with the mission and vision of the University. The interest in higher education is increasingly defined not by finite endings (i.e., by a hard start and stop of four years for a bachelor's degree or two years for a master's degree) but by ongoing, life-long learning. A growth in academic programs (from certificates to graduate degrees, stackable credentials, 4+1, 3+2 programs or articulation and transfer agreements) is intimately connected to growth in institutional revenues in the form of tuition and State Share of Instruction, a must for the University. I look forward to working closely with the deans, chairs, and faculty to nurture innovative ideas and approaches for programmatic growth.
- **Enrollment and Retention:** The changing student demographics in the Upper Midwest are certainly challenging at the moment, but those challenges are more at the traditional student population levels. This gives us an opportunity to make new inroads for non-traditional student populations, where enrollment challenges are fewer, such as low-income, under-represented, and adult students. Furthermore, with revenues from traditional sources such as tuition and room and board generally flat across higher education, retaining students has become an important source of revenue, as well as a measure for student and institutional success. All things being equal, it is easier to retain than to recruit. Broadly speaking, an institution like Shawnee State, with its geographic and cost advantages - and with the availability of the right programs - must strive for an overall enrollment much higher than the mid-3,000s, especially when physical space is available to accommodate higher enrollment. In addition, surgically improving retention numbers where they may be lagging should be a top priority, contributing to the good work already being done by staff in co-curricular areas on campus. I look forward to working with Vice President Eric Braun and faculty and staff to attract new students and retain existing ones at higher levels.
- **Financial Sustainability:** As we look toward the future of Shawnee State, there is no doubt that financial sustainability must be a strategic goal. Everything starts with programs, however. Strategically focusing on programmatic growth has only positive ripple effects for enrollment and finances. We should also look for new revenue streams

for the University. I look forward to working with Vice President Michael Barhorst and many others toward shoring up institutional financial strength.

Additionally, the following merit considerable attention:

- **Accreditation (institutional and programmatic):** We must - and will - do all we can to ensure successful mid-cycle review for institutional accreditation by the Higher Learning Commission in 2022-2023. For this purpose, I will soon establish an Institutional Accreditation Steering Committee to help us prepare for that successful review. In line with programmatic opportunities, we must seek more programmatic accreditations, for they speak not only to quality but add value for students and the University.
- **Assessment:** Engagement in continuous improvement should not occur just because accreditors and other external entities require it; it should be something we do for ourselves for our own improvement, both on the curricular and co-curricular side of the house. I will seek to provide energy on this issue as well, and look forward to your ideas about further engagement in self-assessment.
- **Program Evaluation:** Like any organization, and in line with ongoing evaluation, we must also engage in periodic, systematic, and data-informed analyses of all programs and, if necessary, look toward sunsetting those that no longer fit the mission, vision, and the criteria for sustaining programs. Of course, such an evaluation must occur responsibly, candidly, and follow clear procedures that involve faculty. Though difficult, this process serves as an important exercise in refreshing the academic portfolio of an institution, and I look forward to engaging with many of you to conduct such analyses for programmatic and institutional vitality.

While I realize that the last few months have been particularly challenging, although no different than elsewhere across higher education, we must invest in institutional growth and not just look at the cost-cutting side of the ledger, for I know of no organization that has grown by cutting. It is my sincere hope that some day soon, in a post-COVID-19 world, we return to talking about hiring new full-time, tenure-track faculty again. In all these efforts, my approach will be based on strategic considerations and in alignment with the mission and vision of the University. Also in all these efforts, my guiding principles would include being pragmatic, transparent, thoughtful, data-oriented (especially as a quantitatively-trained social scientist), and inclusive, working under guidance provided by President Jeff Bauer.

Again, I am thrilled by the opportunity to serve as provost at Shawnee State. I look forward to working with all of you and engaging with you about the future of the University. Most immediately, as we begin the fall semester during the ongoing pandemic, the health and safety of everyone must remain the top priority. We will navigate through these adjustments and, as we emerge on the other side of the pandemic, we will continue to provide the strongest educational opportunities for our students. Higher education - and regional institutions like Shawnee State - will undoubtedly play a central role in jumpstarting the economy, and SSU graduates will be an integral part of it. I believe our best days lie ahead.

I wish all of you a very productive fall semester. Thank you for all you do for the students and the University.

Go Bears,  
Sunil

### **College of Arts and Sciences**

- Dr. Sarah Minter was awarded a small grant from the Ohio Biological Survey to conduct research with an undergraduate student.
- Dr. Logan Minter and Dr. Erik Larson have successfully launched the SSU Tree Trails website: <https://www.shawnee.edu/campus-life/trees>.
- Dr. Jinlu Li has had 4 (mathematical) papers accepted for publication since January.
- Dr. Linda Hunt presented at the Faculty Workshop of Co-Requisite Mathematics Remediation sponsored by the Ohio Mathematics Initiative, which ongoing project of the Ohio Department of Higher Education.
- In March, SSU was approved to be on the Society of Actuaries list of recognized Universities and Colleges with Actuarial Programs with Introductory Content.

### **College of Professional Studies**

- *Department of Nursing*
- New Chairperson
  - Dr. Cathy Bailey will serve as Interim Chairperson for the Department of Nursing this year. She replaces Dr. Leeann Denning who has accepted a faculty position in the Department of Allied Health Sciences where she will teach in the Bachelor of Health Sciences degree program.
- Grant Funding
- In 2018, the Department of Nursing was awarded a Regional Job Training Grant for \$41,717.49. This grant enabled the Department to purchase the following equipment for the SSU/Southern Ohio Medical Center (SOMC) Simulation Lab located at the East Campus of SOMC:
  - Live Stream Video Cameras, Drop Microphone, and Speaker System
  - 60-inch TV
- This equipment will allow streamed video to be sent to the TV mounted in a separate room in the Lab. Students can watch and hear others engaged in simulated patient care and be part of the debriefing/critiquing process when the scenario has ended. The cameras have intense zoom capabilities and the instructor/observers are able to clearly see the simulation participants as they engage in patient care.
- The grant also provided for the purchase of:
  - PerSim Simulation System: An augmented reality simulation system
  - IV Simulator: Open Hand Intravenous Injection Training Arm
  - 2 Laptops: used for documentation of simulated patient situations
  - Alaris Medley Pump Combo: IV pump with software

- Approximately 10 years ago, a Simulation Lab was established on the East Campus of SOMC. SOMC supplied the space and SSU supplied the equipment used for clinical simulation. The equipment is used by both SSU and SOMC to engage students (and practicing health care professionals) in realistic, simulated clinical situations.
- *School of Education*
- New Programs
  - Two new programs: Orientation and Mobility and Teachers for the Deaf/Hard of Hearing have been launched with both at enrollment capacity.
- Simulated Field Experiences
  - With restrictions on visitors to P-12 classrooms in regional schools, the School will utilize a virtual reality and artificial intelligence program to provide early students with “field experiences” without leaving campus. In an effort to provide top quality, clinically-based preparation during COVID 19, the School will pilot virtual field experiences. The faculty will be studying the effects of this simulated alternative to site-based field experiences on educator preparation and to investigate the generalizability to real students.
  - Senior Education majors engaged in their year-long clinical year are placed with regional schools. These teacher candidates have received placements with a mixture of instructional modalities. Like SSU itself, our teacher candidates may experience face-to-face, blended, and online school experiences throughout their final, professional year.
- *Department of Business Administration*
- Information Security Bachelor’s Degree
  - Dr. Duane Skaggs, Ms. Janice Johnson, Mr. Dovel Myers, and Dr. Paul Madden are completing the required new degree proposal for the Ohio Department of Higher Education. The program launch will begin following full approval by the Chancellor. The degree program has been approved by the University Faculty Senate, the Board, and the Higher Learning Commission has been notified of the new program.
- Online Program Development
  - Bachelor of Science in Business Administration majors in Accounting and Management are in development to be offered in collaboration with Wiley.
- Sport Management to Department of Business Administration
  - As part of the reorganization of the Department of Rehabilitation and Sport Professions to the new Department of Rehabilitation Therapies, the Sport Management and health and PE activities courses are now part of the Department of Business Administration. Dr. Steve Rader’s faculty appointment is now with Business Administration.
  - The Sport Management program is planning its first-ever “Sports Leadership Summit” to be held October 24. Originally planned to be a way to bring alumni back to campus, the summit will now be offered in a virtual format with the intention of attracting both program alumni and current sport management students. The program will include a video campus tour highlighting the Rhodes Athletic Center renovations and a program status



overview provided by Dr. Rader. The highlight will be a one-hour interactive panel discussion featuring alumni representing multiple graduation years and employment categories, both in and out of sports. Topics will focus on current issues in their industry, including COVID and Black Lives Matter (BLM) impacts. The Summit is free. The Sport Management Program Advisory Board has played an integral role in the development of this event, which we hope will be annual.

- Marketing Agency Projects
  - Bachelor of Science in Business Administration Marketing majors completed the 14th Marketing Degree Agency Project since starting them in Fall 2018. These projects engage SSU Marketing majors with an area agency/business to complete a full marketing plan for their assigned site. This summer, they finished a project with Portsmouth Area Chamber of Commerce, creating content about area businesses for the Chamber's membership newsletters. For Fall 2020, SSU students will work with a local accounting firm, two projects with Community Action Organization of Scioto County, and an area business. These class projects provide valuable real-world marketing projects for the students, while also providing no-cost support for area agencies and businesses.
- *Department of Allied Health Sciences*
- Faculty Update
  - Dr. Leeann Denning, former faculty member and department chairperson in the Department of Nursing, has accepted a faculty position in the Bachelor of Science in Health Science program.
- Behavioral Health Paraprofessional Certificate Program Development
  - The BHPC program has been placed in the Department with Ms. Mariah Woodward, Director of the Health Sciences program and Dr. Leeann Denning will assume leadership for this certificate. Dr. Denning will serve as the project coordinator for the Behavioral Health Paraprofessional Certificate program. This program is being developed through a generous donation from the U.S. Department of Health and Human Services, Health Resources and Services Administration.
- Bachelor of Science, major in Exercise Science
  - As part of the reorganization of the Department of Rehabilitation and Sport Professions to the Department of Rehabilitation Therapies, the Bachelor of Science with a major in Exercise Science and program faculty, Mr. Tony Ward and Mr. Keenan Perry, have been relocated to the Department of Allied Health Sciences.
- Medical Laboratory Technology
  - The SSU MLT program and the work our faculty and students contribute during the COVID-19 pandemic was recently highlighted in the Shawnee State University news. <https://www.shawnee.edu/news/ssu-medical-lab-program-preparing-technicians-todays-testing-challenges>.
- *Rehabilitation Therapies*
- Reorganization

- This summer, the Department of Rehabilitation and Sport Professions was reorganized to be the Department of Rehabilitation Therapies. The newly-formed department includes the Occupational Therapy Doctorate-Post Professional, the Master of Occupational Therapy, the Bachelor of Science in Occupational Therapy (3+2/MOT), and the Occupational Therapy Assistant.
- Clinicals During the Pandemic
  - Currently, the OTA and MOT programs have approval to have students participate in telehealth at Hillview, The Counseling Center, and local schools and clinics for children.
- New Occupational Therapy Doctorate-Post Professional
  - The post-professional OTD program has 5 students starting this fall.
- Engineering Technology
- Environmental Engineering Technology
  - The Department of Engineering Technology is phasing out Environmental Engineering Technology Program and developing teach-out plans for the students currently enrolled in the program.
- Face Shield PPE Project
  - The face shield PPE project continues to support community's efforts to protect against COVID-19.
  - SSU and the Department of Engineering Technology Plastics Program has been awarded \$250k from the state and the Appalachian Regional Commission (ARC). We are currently awaiting completion of grant agreement. Funds may be used for equipment and material costs related to PPE production, but the equipment will make our labs more robust and can be used for years into the future for education, training, and projects.
  - The PPE Project has received press attention from several outlets, including: WCHS ABC (Huntington/Charleston), WZAH FOX (Huntington/Charleston), WSAZ NBC (Huntington/Charleston), WSYX ABC (Columbus), Portsmouth Times, and other local/regional print outlets.
  - The shields have been sent as far away as New York.
- Planning for Fall
  - Faculty across the department have been working to plan flexible, safe, and effective instruction for Fall. Some faculty have been in to adjust the physical space of labs (e.g. gaming has spaced out and reduced workstations). This is not a small task with our unique offerings and our reputation for "hands-on" and applied activities.
- Choose Ohio First Scholarship
  - The Choose Ohio First (COF) Scholarship program was created by the Ohio State Legislature in 2007 to increase the number of Ohio students completing postsecondary education in science, technology, engineering, mathematics, and medicine (STEMM) and STEMM education. The official goals of the program are to advance the economic growth of each region in the state in STEMM-related fields and to support the success of program participants.
  - Shawnee State participated in a competitive process with other Ohio colleges and universities. We received an award for Gaming that began with a small

group of students in Digital Simulation and Gaming during the 2018-2019 academic year. The award amount was greatly increased for the 2020-2021 year to provide scholarship opportunities for students from across the State of Ohio who are underrepresented on campus and in gaming. Students are eligible for up to \$8,112 in support for tuition and fees as well as numerous specific opportunities to work with professors and mentors in research, entrepreneurship, and internship activities. The program has grown from eight students in 2018-2019 to fifty students for 2020-2021, resulting in nearly \$400,000 in COF scholarship funds being awarded.

- In addition, 2020-2021 is the inaugural year for a new \$308,000 multi-year award specifically for students majoring in Computer Engineering Technology or Computer-Aided Drafting and Design. Eleven students have received \$22,050 in scholarships to support their studies in these disciplines during 2020-2021.
- *CPS Academic Advising and Student Support*
- Health Sciences Applications
  - Selective health science programs are transitioning from paper applications to online applications by October 1, 2020. Lindsay Monihen is leading a collaborative team of Program Directors and the Office of Admissions to create a project timeline and ensuring the process is student-friendly and efficient.
- Registration and VAOS Completion Update
  - The College of Professional Studies welcomed 405 new students. Kelli Smith and Lindsay Monihen preregistered 100% of all incoming CPS students. 89% of those registered students completed a VAOS. Kelli hosted 36 group VAOS this summer; Lindsay hosted 35 group VAOS (this figure excludes individual appointments).

## **Student Affairs**

- *Housing and Residence Life (HRL)*
  - Move-in Summary
  - To help keep our campus community safe, HRL staggered move-in over 6 days to reduce the number of people moving in at once and promote safety. One-hour move-in times for each student were scheduled to control the flow in and out of the apartments.
- *Housing Fall Numbers*
  - 25 Resident Assistants
  - 649 New and Returning students
- *Student Life*
- *Weekend of Welcome 2020*
  - During this multi-day virtual and on-ground event, students received their official welcome to Shawnee State University, learned about being a college student, and were connected to key student life and academic services. Our Weekend of Welcome is for all new students, whether students plan to live on campus or

commute from home. WOW is designed to help new students make the transition to college life and for everyone on campus to celebrate the start of a new academic year. This year's WOW offered the on-campus experience but also the ability for students to join us virtually through Zoom, allowing us all to be together safely. Students registered for Weekend of Welcome through their MySSU, with 468 students choosing to participate in-person and virtually.

- *Bear Necessities Pantry (changes due to COVID-19)*
  - Student Life is pleased to announce we are offering students a new service called Pantry Pick-Up for the Bear Necessities Pantry. Students can now pre-order items, and the pantry workers will have it bagged for them to pick up either Thursday or Friday. To meet the needs of students and protect the safety of pantry workers and users, the pantry will not be open this semester for drop-in visits. The mission of the pantry is to provide food, personal care items, and basic school supplies to students experiencing food insecurity or hunger. The pantry is located in MUC 221 B.

### **Clark Memorial Library**

- Although the library building was closed from late spring through summer, we continued to provide library services to our students, faculty, and staff. Our chat service was available 33 hours a week throughout this time. We were able to provide both research help and answer other questions students may have had about the library. Late in the summer, we started Contactless Pickup. While we only had one individual use it, we developed the process and plan to continue it in some form.
- Now that the library is open, we are providing a socially-distanced library building. Both research help and instruction will still be provided, but now it will be done virtually. These are just a few of the ways the library will continue to provide excellent library services and spaces to students, while being mindful of best practices for the coronavirus crisis.

### **Center for International Programs and Study Abroad**

- Shawnee State University International Programs is currently facilitating our new international student arrivals. For Fall 2020, we have 11 new international students who obtained visas and could attend SSU (below our normal amounts due to COVID-19). Many of these students are on our Men's/Women's Basketball and Soccer teams. This Fall, we will the following countries represented at SSU: Bangladesh, Malaysia, England, Australia, Netherlands, Scotland, Ukraine, Brazil, China, Nigeria, Canada, Saudi Arabia, Spain, France, South Africa, and India.

Respectfully submitted,

Sunil Ahuja, Ph.D.

Provost and Vice President for Academic and Student Affairs

## Fall Weekly Registration Comparison Report

	Fall 2017 15th Day	Fall 2018 15th Day	Fall 2019 15th Day	1st Day 8/24/2020	
<b>New Undergraduate Enrollment</b>					
First-time Freshmen	700	617	808	630	
Transfer	183	153	194	133	
<b>Total New</b>	<b>883</b>	<b>770</b>	<b>1002</b>	<b>763</b>	
<b>Difference from prior year</b>		<b>-113</b>	<b>232</b>	<b>-239</b>	
<b>Continuing Undergraduate Enrollment</b>					
Freshmen	315	171	179	209	
Sophomore	602	564	501	529	
Junior	548	537	551	478	
Senior	751	721	747	802	
<b>Total Continuing</b>	<b>2216</b>	<b>1993</b>	<b>1978</b>	<b>2018</b>	
<b>Difference from prior year</b>		<b>-223</b>	<b>-15</b>	<b>40</b>	
<b>Total Degree Seeking Undergraduate</b>	<b>3099</b>	<b>2763</b>	<b>2980</b>	<b>2781</b>	
<b>Difference from prior year</b>		<b>-336</b>	<b>217</b>	<b>-199</b>	
<b>New Graduate Enrollment</b>					
Graduate - New	53	44	54	37	
<b>Total New</b>	<b>53</b>	<b>44</b>	<b>54</b>	<b>37</b>	
<b>Difference from prior year</b>		<b>-9</b>	<b>10</b>	<b>-17</b>	
<b>Continuing Graduate Enrollment</b>					
Graduate - 1	50	42	54	82	
Graduate - 2	48	40	35	55	
Graduate - 3	25	30	33	5	
<b>Total Continuing</b>	<b>123</b>	<b>112</b>	<b>122</b>	<b>142</b>	
<b>Difference from prior year</b>		<b>-11</b>	<b>10</b>	<b>20</b>	
<b>Total Graduate</b>	<b>176</b>	<b>156</b>	<b>176</b>	<b>179</b>	
<b>Difference from prior year</b>		<b>-20</b>	<b>20</b>	<b>3</b>	
<b>Total Degree-Seeking Enrollment</b>	<b>3275</b>	<b>2919</b>	<b>3156</b>	<b>2960</b>	
<b>Difference from prior year</b>		<b>-356</b>	<b>237</b>	<b>-196</b>	-6.21%
<b>Non-Degree Enrollment</b>					
NT - Visiting	3	2	0	0	
NC-Non-degree Certificate	0	0	0	2	
NR - Non-degree	6	4	10	52	
NH - Highschool not CCP	13	4	1	0	
NP - College Credit Plus	171	175	291	127	
ND - Returner CCP and non-CCP	112	146	176	143	
NS - Senior Citizen	2	3	7	3	
<b>Total Non-Degree</b>	<b>307</b>	<b>334</b>	<b>485</b>	<b>327</b>	
<b>Difference from prior year</b>		<b>27</b>	<b>151</b>	<b>-158</b>	
<b>Grand Total</b>	<b>3582</b>	<b>3253</b>	<b>3641</b>	<b>3287</b>	
<b>Difference from prior year</b>		<b>-329</b>	<b>388</b>	<b>-354</b>	-9.72%

## Top Program Enrollment as of August 24, 2020

### Graduate:

- Master of Occupational Therapy 73
- Masters of Science Mathematics 47

### Bachelor:

- Health Science – B.H.S. 195
- Digital Simulation &  
Gaming Engineering Technology– B.S. 160
- Game and Simulation Development – B.F.A. 146
- Nursing – B.S.N. 123
- Psychology – B.A. 106
- Biology-Biomedical – B.S. 102

### Associate:

- General Studies – A.A. 280
- Nursing – A.A.S. 66
- Occupational Therapy Assistant – A.A.S. 59

### Non-Degree:

- College Credit Plus 256



**WELCOME BACK BEARS!**

*LET'S GET FALL SEMESTER STARTED*



# Preparing for Return to Campus

Mid March: Staff work remotely and instruction delivered online

Late May: Furloughs & layoffs, substantially reduced workforce (on-site and remote)

June 4: Phased Return to Campus Plan published (3 phases)

- **Phase 1. June 1 – June 28** (return of key non-public office staff). **Phase 2. June 29 – August 23** (return of limited public services). **Phase 3. August 24** (fall term)

June – August (ongoing): Preparatory actions & guidance for phase 3 (facilities, instructional, safety & health)

August 8 – End furloughs

- **Steady increase of on-site employee presence**
- **Some remote work continues**

August 24: Start of fall term

- **Expanded employee on-site presence, in-person classes faculty and students**
- **Continuation of health and safety protocols and guidance**





Fall 2020  
**BEARS Return**  
Shawnee State University Plan for a Safe Return to Campus

Fall 2020  
**BEARS Return**  
Shawnee State University Plan for a Safe Return to Campus

COVID-19 Checklist for Faculty  
**WHAT I NEED TO KNOW TO CREATE A SAFE & HEALTHY COMMUNITY**

COVID-19 CHECKLIST FOR STUDENTS  
**What I Need to Do to Create a Safe & Healthy Campus Community**

COVID-19 Checklist for Employees  
**WHAT I NEED TO KNOW TO CREATE A SAFE & HEALTHY CAMPUS COMMUNITY**

Fall 2020  
**BEARS Return**  
Shawnee State University Plan for a Safe Return to Campus

**CLASSROOM PROTOCOLS FOR FACULTY AND STUDENTS**

**WHAT DO YOU DO IF YOU SEE SOMEONE NOT WEARING A MASK?**

**#BEARSTOGETHER**  
Shawn E. Bear says COVID-19 makes him "ROAR!"



**KEEP CAMPUS HEALTHY!**

- Download the SSU App
- Get Your Health Pass Daily
- Scan Your Pass at Building & Classroom Entrances

**ROAR**

- BEAR YOUR MASK WHEN YOU FEEL LIKE IT
- MAINTAIN SOCIAL DISTANCE
- ALWAYS WEAR A MASK FOR CAMPUS EVENTS
- WASH YOUR HANDS REGULARLY



**Campus Life Guidelines**  
Fall 2020

**Return to Campus Plan**  
July 2020

**WHAT DO I DO IF I SEE SOMEONE NOT WEARING A MASK?**



**Contact Trace**

TN - Tanner Place - 6

**COVID-19 Guide**

**Social Distancing:**

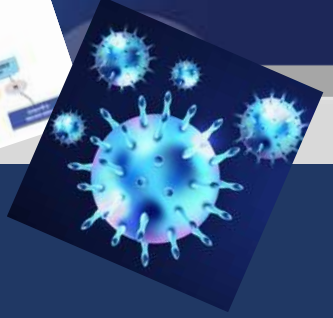
**BEARS Return**  
Shawnee State University Plan for a Safe Return to Campus

**HEALTH AND SAFETY GUIDELINES FOR EMPLOYEES**

**HEALTH PASS NOW**  
**SSU APP!**



**Must have a Face Mask to Enter**  
Keep Your Distance. Go the Distance.



# Planning for a Safe Return to Campus

# TYPES OF ACTIVITIES COMPLETED AND ONGOING

Assessing and making facility modifications (safety & sanitization measures)

Gaining knowledge of COVID-19 environment, rules; developing guidance & protocols

SSU Health Team, local health department COVID-19 tests, quarantining

Bulk procurement of PPE, sanitization supplies, protective gear

Robust, transparent, and ongoing communication to all groups

Create COVID-19 Health Systems (referrals, incident reports)

HOW TO and WHAT IF scenarios for students and employees

Training and behavioral expectations (masking, social distancing, personal hygiene)

# ACTIVITIES IN PROGRESS

## Prioritized Testing Protocols

- Based on frequency and nature of contacts that increase exposure
- Whether masks & social distancing can be maintained

## Tracking and Dashboard

- Data elements that inform and adhere to confidentiality requirements

## Responding to a COVID-19 Outbreak

- Relevant Factors to Consider
- Range of Responses (low risk, moderate to high risk)



## Planning for a Safe Return to Campus Board of Trustees September 11, 2020

### ➤ **ACTIVITIES COMPLETED AND ONGOING**

#### • **Guidelines and Communications**

- Issued multiple informational guidelines for all segments of the University covering a myriad of subjects, such as: return to campus plan, classroom protocols for faculty and students, what to do if exposed or ill, safety and health guidance for employees, return to work guidelines for employees and supervisors, campus life guidelines, what to do if someone is not wearing a mask, how to get tested, information on quarantining and case management, workplace accommodation form, and more.
- Daily Updates Issued and new Web Sites
  - COVID-19 Guidance <https://www.shawnee.edu/health>
  - COVID-19 Health Pass <https://www.shawnee.edu/health-pass>
- Direct communications to campus constituencies: President, Director of Human Resources, Provost, Communications, Dean of Students, Dean of College of Arts and Sciences, Dean of College of Professional Studies.
- Community Zoom Meetings
  - New Students and Parents
  - Faculty
- Academic and classroom information
  - Revised Academic Calendar
  - Course Schedule reflecting modality of instruction
  - Attendance Policy Recommendations
  - Classroom Protocols (suggested syllabus statement, cleaning and sanitizing desks, requirement of face masks, etc.)
- Training and Individual Expectations
  - COVID-19 Safety and Health Online Training
  - My Pledge to Go the Distance to Prevent Coronavirus



## UPDATE AND SUMMARY OF ACTIVITIES

- **Policies and Procedures**

- President issued Policy 5.42, Facial Covering (Mask)
- Updated Policy 4.93, Infectious and Communicable Diseases (non-substantive)
  - Rewrote related procedure 4.93:1 to conform with current processes
- Developed COVID-19 addendum to Student Code of Conduct
- Updated Leave of Absence policies per new federal guidelines

- **Health Systems**

- SSU Health Team focused on Covid-19, expanded support
- Health Pass on the SSU App, daily monitoring, direct tracking by SSU Health Team
- COVID-19 Incident Form (self-report of exposure, notification of non-compliance)  
COVID-19 Aviso (faculty for students)

- **Testing, Quarantining and Case Management**

- SSU Health Team in collaboration with Local Health Department
  - Managing campus cases, quarantining, follow-up
  - Coordination with student life on food services and other needs while in quarantine or isolation status
  - Tracking of health status, release to work/class
- Testing available beginning August 12
  - Resident Advisors, Student Ambassadors initial completed
  - Established priority testing groups (higher exposure potential for more frequent testing)
  - Expanded SSU Health Clinic to meet testing program needs

- **Readiness Check**

- Compared SSU preparations and actions against Governor's Responsible RestartOhio Guidance
  - As of August 7, University completed or nearly completed 51 individual plans or actions covering 16 categories (e.g., phased return to campus planning to facilities sanitization measures, readiness of resident halls, classroom spacing, course scheduling, general office environments, student activities, campus events, campus visitors, testing, study abroad/international travel, recreational and student athletics, etc.)
  - Completed space & facilities assessments with follow-up walk-throughs to verify conducted.

### ➤ ACTIVITIES IN PROGRESS

- **Prioritized testing protocols**
  - Priority based on potential of exposure due to frequency and nature of contacts with others, if PPE is restricted or not required due to programming or type of activities are engaged. Includes but not limited to: student athletes, residential students, off campus students, students and faculty engaged in laboratory or clinic activities requiring close proximities, faculty with in-person classes, employees with significant public contact, faculty with some on-campus presences, other employees with some contact with public and other employees on a regular basis.
- **Tracking on-campus testing and cases, local, regional, and state data, hospitalizations, other relevant data**
  - Dashboards under construction with data elements that inform various groups while maintaining confidentiality of medical records.
- **Developing plans to respond to Covid-19 outbreaks and that considers factors such as:**
  - Local, regional and statewide data that includes, but not limited to: number of positive cases (congregant and community), positivity rate (% positive to number tested), hospitalizations in area, quarantine needs and capacity, remaining days in term (to assess impact on students' academic progress & potential additional exposure)
- **Responses can vary depending upon:**
  - Combination of factors applicable to the campus and area
  - Safety of the community
  - Impact on students and campus community
  - Local health department assessment and advisories or mandates
  - Statewide or ODHE advisories or mandates
- **Possible range of responses:**
  - Low risk conditions – congregant and zero or negligible community positive cases, data elements indicate decreasing trends, quarantine capacity exists, local health department assesses low risk of spread.
    - Possible Actions: Quarantine individuals, if necessary, short in-person class suspension (2-3 days to ensure minimal impact), continue

## UPDATE AND SUMMARY OF ACTIVITIES

operations and services, track data, reinforce safety protocols, strengthen cleaning and sanitizing protocols.

- Moderate to High risk conditions – congregant and multiple community positive cases, data elements indicate trends holding or increasing, inadequate quarantine capacity, local health department assess moderate to high risk of spread.
  - Possible Actions: Longer-term in-person class suspension, moving to all remote learning (considers remaining days in term), potential residential housing closure or permit minimum to remain quarantined on site; depending on extent of community spread, return to mostly remote services, strengthen cleaning and sanitizing protocols
  - Renew Return-to-Campus Plan